



by **ADCRAFT**®

CTS-1800W

Fresh Shot Countertop Steamer

This manual contains important information regarding your *Adcraft* unit. Please read the manual thoroughly prior to equipment set-up, operation and maintenance. Failure to comply with regular maintenance guidelines outlined in this manual may void the warranty.

PLEASE READ!!!

WARNINGS

- Do not touch any hot surfaces
- Plug only into a 3-hole grounded electrical outlet
- Do not immerse unit, cord or plug in liquid at any time
- Unplug cord from outlet when not in use and before cleaning
- Do not operate unattended
- Do not use this unit for anything other than intended use
- Do not use outdoors
- Always use on a firm, dry and level surface
- Do not use if unit has a damaged cord or plug, in the event the appliance malfunctions, or has been damaged in any manner
- Keep children and animals away from unit
- Any incorrect installation, alterations, adjustments and/or improper maintenance can lead to property loss and injury. All repairs should be done by authorized professionals only
- Ensure that the designated power supply is adequate for continual usage and the voltage is correct

SET UP

1. Remove all packing materials both inside and outside the unit and place on a flat surface.
2. Clean machine thoroughly before first use.
3. Position unit near a power outlet. It is not recommended to use an extension cord for this item.
4. Do not place in an area where gasoline, paint or flammable liquids are used or stored.
5. Unit must be used operated with the legs installed.

TO USE

1. Plug the unit into a grounded 3-prong 120V outlet.
2. Open the tank cover and make sure that the filter inside the tank is properly installed.
3. Fill the unit up with approximately 3 quarts of cold tap water (Do not overfill the tank). This unit is designed to be used with cold tap water. Distilled water may be used to reduce calcium/mineral deposit build-up.
4. Turn the on/off switch to the on position and allow for the unit to preheat for 30 minutes.
5. Once heated, open the top cover and place food items into the basket and then close the top cover.
6. Press the steam button for 2 seconds and release and wait 20 seconds for the steam to penetrate the items inside the unit. Repeat if product requires more steam. **Please note that pressing and holding the steam button for longer than 2 seconds at a time will often flood out and result in poor steaming.**
7. Remove the hot, steamed product from the unit.
8. Turn unit power switch to off if finished using.

Warning: The exterior of the unit gets hot while in use!

CLEANING – NOTE: To maintain cleanliness and increase service life, the unit should be cleaned daily. Do not immerse the unit in water or any other liquid. If liquid enters the electrical compartment it may cause a short circuit or electrical shock.

Daily Maintenance

- Turn the unit off and disconnect the power cord from the electrical outlet
- Allow for unit to cool for 45 minutes before cleaning
- Wipe down the unit with a damp cloth or sponge and hot soapy water
- Rinse by wiping with a clean damp cloth
- Wipe dry
- Do not immerse unit in water or other liquid

Monthly Maintenance

- Turn the unit off and disconnect the power cord from the electrical outlet
- Allow for unit to cool for 45 minutes before cleaning
- Perform daily maintenance as listed above
- Remove the spray tube by lifting the loose end and pulling it out of the generator hole (Fig.1)
- Slide the metal cover off the spray tube, take a paper clip and poke out all of the tube's holes



Fig. 1

- Gently wash the tube under running water to clear the deposits out of the loose end. Re-attach the cover onto the tube. Please do not bend the spray tube. Bending it will cause permanent damage.
- Use a scraper to remove the excessive calcium/mineral buildup from the generator surface
- Thoroughly wipe the generator with a damp cloth to remove any loose buildup and reassemble the unit

If deposits are still excessive and/or difficult to remove, please refer to the steps below:

1. Pour delimer solution onto the generator surface. Follow the delimer manufacturer’s instruction for proper mixture and use. If using a chemical cleaner, please check to see it is safe to use on the metal. Please follow all precautions and safety warnings on the product label.
2. Using a sponge or a dry towel, remove the delimer solution from the generator surface and then rinse the surface with clean water.

Please note: to ensure proper steaming, some calcium/mineral deposits must be present on the generator surface. If during cleaning, the surface does become free of calcium/mineral deposits, add plain tap water to the surface and allow it to boil off. If necessary, repeat this process to create a thin coating of calcium/mineral deposits.

Please note: In soft water areas, it may be necessary to add a small amount of lime to the generator surface to season it. This will ensure proper steaming by producing a thin coating of calcium/mineral deposits on the generator surface.

Seasoning mixture consists of ¾ ounce baking soda, ¾ ounce lime mixed with 1 quart of water. Stir mixture and pour ¼” deep onto the hot generator surface. After mixture is converted to steam, the remaining loose powder can be removed.

3. Plug the power cord into the outlet
4. Turn the power on and allow the unit to warm up for approximately 30 minutes.
5. Push and release the steam button several times to purge the remaining delimer residue from the generator surface.
6. Turn the unit’s power off; re-install all parts and accessories before using again.

Water Tank Filter Maintenance

The water tank filter is used to prevent particles or food products from entering and damaging the water pump. Inspect and clean this filter monthly by following these steps:

1. Turn the power off, unplug the cord and allow unit to cool down before proceeding.
2. Open the slide door.
3. Remove the water tank filter located inside the tank by pulling it upwards and out of the bottom hole. (Fig.2)
4. Clean the filter by running it under tap water. Replace the water tank filter if the screen is torn or damaged.
5. Re-install the filter stem into the bottom hole of the tank.
6. Fill the water tank and test the unit



Fig. 2

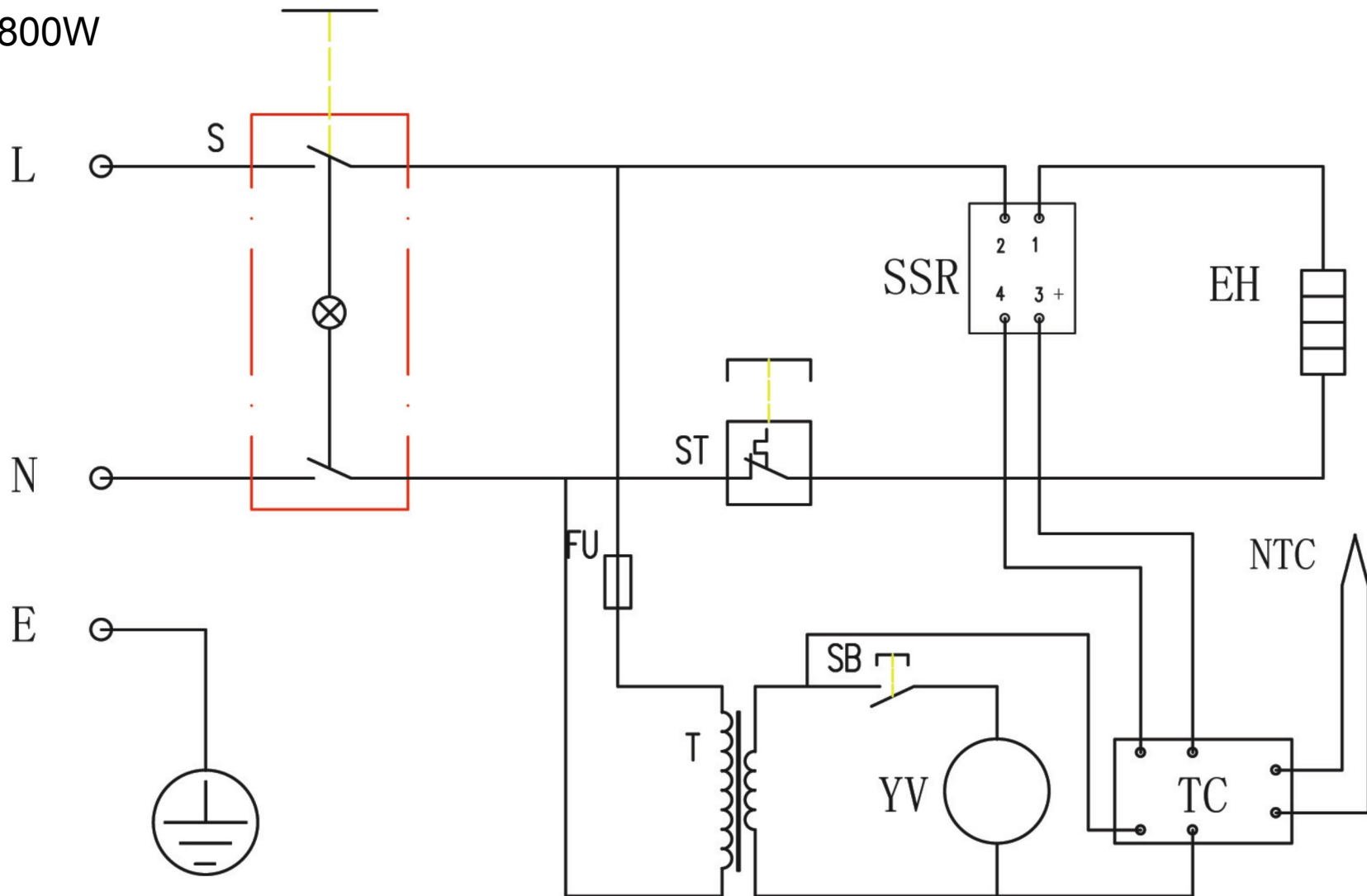
SPECIFICATIONS

Item Number	Description	Voltage	Wattage	Amps	Net Weight	Dimensions
CTS-1800W	Fresh Shot Steamer	120V	1800W	15	42 lbs	16.75”W x 17.5”D x 8”H

Thank you for your purchase!

Admiral Craft Equipment Corp.
 940 South Oyster Bay Rd.
 Hicksville, NY 11801
 P: 1-800-223-7750
 F: 1-800-447-7751
 www.admiralcraft.com

CTS-1800W



S-----POWER SWITCH

SSR--RELAY

FU----FUUSE

YV----PUMP

TC----PCB

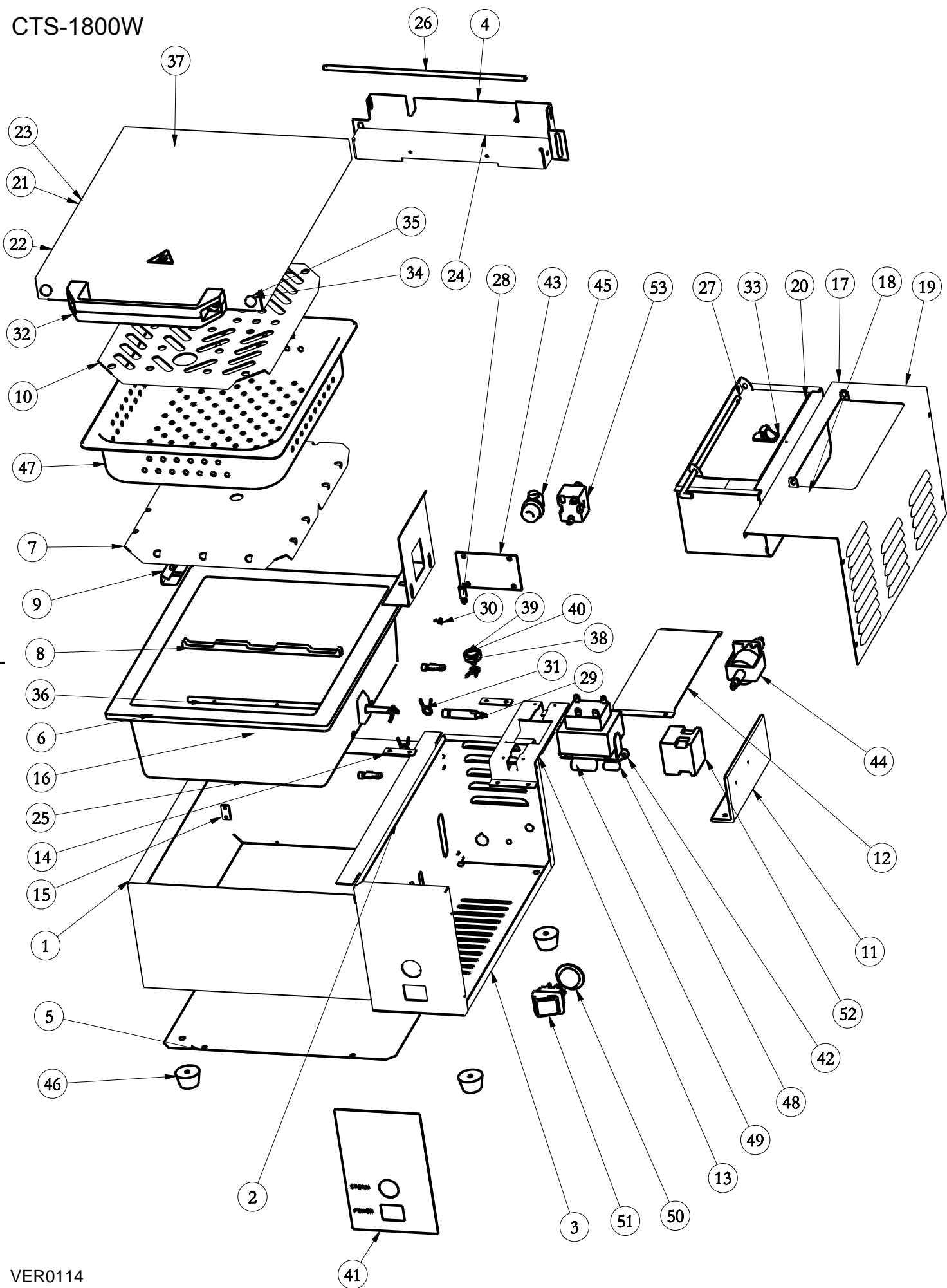
ST-----THERMOSTAT

EH-----HEATING ELEMENT

SB-----BUTTON SWITCH

T-----TRANSFORMER

NTC---TEMPERATURE SENSOR



CTS-1800W - Fresh Shot Countertop Steamer

Parts List

Ref. No.	Description	QTY
1	BODY SHELL	1
2	CONNECT PLATE FOR BODY SHELL	1
3	ELECTRIC BOX	1
4	PLATE TO FIX WATER PAN COVER	1
5	BOTTOM PLATE	1
6	PLATE TO FIX PAN	2
7	ATOMIZING SPREAD PLATE	1
8	SPRAY PIPE CLIP	1
9	SPRAY PIPE END CAP	1
10	FOOD PAN	1
11	PLATE TO FIX RELAY	1
12	PLATE TO FIX ELECTRIC PARTS	1
13	PLATE TO FIX PUMP	1
14	PLATE TO PRESS PUMP	2
15	PLATE TO FIX PAN COVER	2
16	PIPE TO PROTECT SENSOR	2
17	WATER TANK ASSY	1
18	WATER TANK BOARDING PLATE	1
19	PLATE TO FIX WATER TANK	1
20	WATER TANK COVER	1
21	WATER PAN COVER ASSY	1
22	WATER PAN COVER OUTER PLATE	1
23	WATER PAN COVER INNER PLATE	1
24	PLATE TO CONNECT WATER PAN COVER	1
25	WATER TANK 120V/1800W	1
26	SHAFT OF WATER PAN COVER	1
27	SHAFT OF WATER TANK COVER	1
28	CONNECTER FOR WATER TANK	1
29	COONECTER OF SPARY PIPE	1
30	SPRING FOR TANK LOCK	1
31	CLIP FOR CONNECTER	4
32	HANDLE OF PAN COVER	1
33	WATER TANK COVER LOCK	1
34	WASHER	2
35	WASHER	2
36	SPRAY PIPE	1
37	SEAL RUBBER	1
38	FILTER BASE	1
39	FILTER PRESS RING	1
40	FILTER NET	1
41	CONTROL PANEL	1
42	TRANSFORMER	1
43	PCB	1
44	PUMP	1
45	POWER CORD SHEALTH	1
46	RUBBER FOOT	4
47	PAN	1
48	FUSE	1
49	FUSE BASE	1
50	PUMP SWITCH	1
51	POWER SWITCH	1
52	RELAY	1
53	TEMPERATURE LIMITER	1

(Page left blank on purpose)

ACE Equipment One Year Limited Warranty

Admiral Craft Equipment Corp. (ACE) warrants its equipment against defects in materials and workmanship, subject to the following conditions:

ACE Equipment is warranted for one year, effective from the date of purchase by the original owner. A copy of the original receipt or other proof of purchase is required to obtain warranty coverage. This warranty applies to the original owner only, and is not assignable.

Should any product fail to function in its intended manner under normal use within the limits defined in this warranty, at ACE's discretion, such product will be repaired, replaced with a refurbished unit, or replaced with a new unit by ACE, after defective unit has been inspected and defect has been confirmed. ACE does not assume any liability for extended delays in replacing any item beyond its control. This warranty does not apply to rubber and non-metallic synthetic parts that may need to be replaced due to normal usage, wear or lack of preventative maintenance.

This warranty covers products shipped into the 48 contiguous United States, Hawaii, and metropolitan areas of Alaska and Canada. Warranty coverage on products used outside the 48 contiguous United States, Hawaii and metropolitan areas of Alaska and Canada may vary. Contact ACE for details at 1-800-223-7750

The following conditions are not covered by warranty:

- Equipment failure relating to improper installation, improper utility connection or supply and problems due to improper ventilation.
- Equipment that has not properly been maintained, damage from improper cleaning, and water damage to controls.
- Equipment that has not been used in an appropriate manner, or has been subject to misuse, neglect, abuse, accident, alteration, negligence, damage during transit, delivery or installation, fire, flood, riot, or act of God.
- Equipment that has the model number or serial number removed or altered.
- Equipment on which the security seal has been broken.

If the equipment has been changed, altered, modified, or repaired without express written permission from ACE, then the manufacturer shall not be liable for any damages to any person or to any property, which may result from the use of this equipment thereafter.

This equipment is intended for commercial use only and this warranty is void if equipment is used in other than a commercial application.

For warranty and non-warranty related issues, technical support, purchase replacement parts and warranty registration visit www.admiralcraft.com. Please have your model number, serial number and proof of purchase ready. It is not necessary to contact the place where you originally purchased your product from.

“THE FOREGOING WARRANTY IS IN LIEU OF ANY AND ALL WARRANTIES EXPRESSED OR IMPLIED INCLUDING ANY IMPLIED WARRANTY OF MERCHANTABILITY OR FITNESS FOR PARTICULAR PURPOSES AND CONSTITUTES THE ENTIRE LIABILITY OF ACE. IN NO EVENT DOES THE LIMITED WARRANTY EXTEND BEYOND THE TERMS STATED HEREIN.”